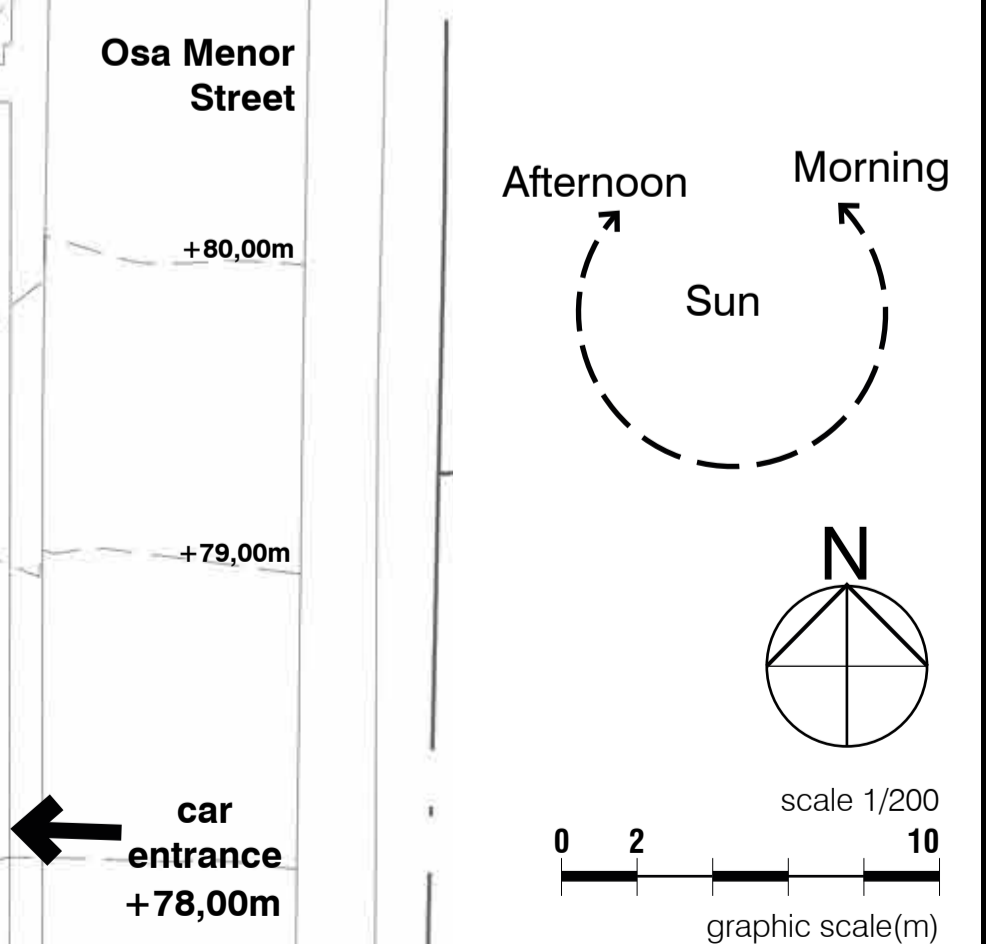


Regulations	Project	
Plot area	3,500 m <sup>2</sup>	700 m <sup>2</sup>
Building allowance 20%	700 m <sup>2</sup>	875 m <sup>2</sup>
Footprint 25%	875 m <sup>2</sup>	
<hr/>		
Bedroom level	265 m <sup>2</sup>	
Entrance level	430 m <sup>2</sup>	
<hr/>		
Leisure level:		
Living area	385 m <sup>2</sup>	
Garage	170 m <sup>2</sup>	
Staff + Laundry	65 m <sup>2</sup>	
Technical + Storage	125 m <sup>2</sup>	
<hr/>		
Total closed area	1,440 m <sup>2</sup>	
<hr/>		
Porches	290 m <sup>2</sup>	
Terraces	65 m <sup>2</sup>	
Courtyards	35 m <sup>2</sup>	
Carport	65 m <sup>2</sup>	
<hr/>		
Outdoor pool	175 m <sup>2</sup>	
Pool terrace	120 m <sup>2</sup>	
Pool pavilion	60 m <sup>2</sup>	
Indoor pool	30 m <sup>2</sup>	



**Layout**  
01 August 2023-A2  
Marbella

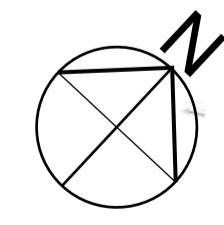
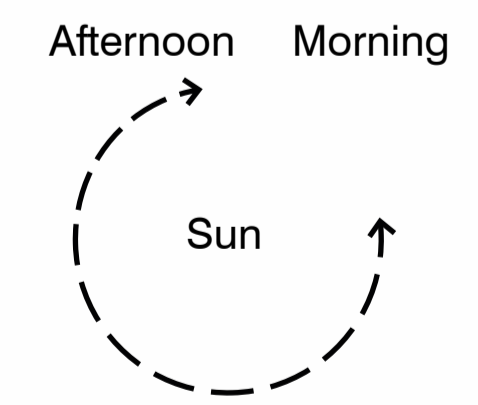
43

42

37

39B

- double height
- staff/technical area
- refurbishment



scale 1/100  
0 1 5  
graphic scale(m)

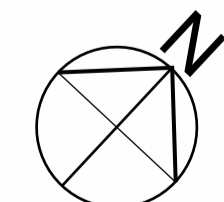
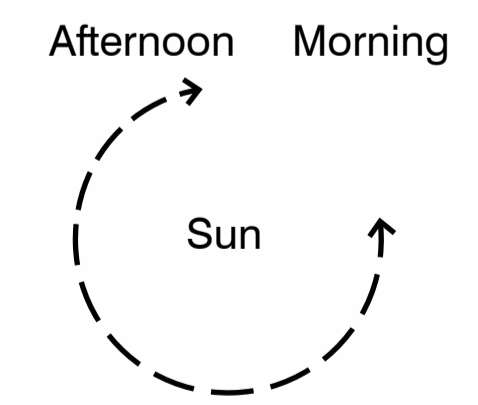
**Entrance level**

01 August 2023-A2  
Marbella

**La Cerquilla 39A**



- double height
- staff/technical area
- refurbishment

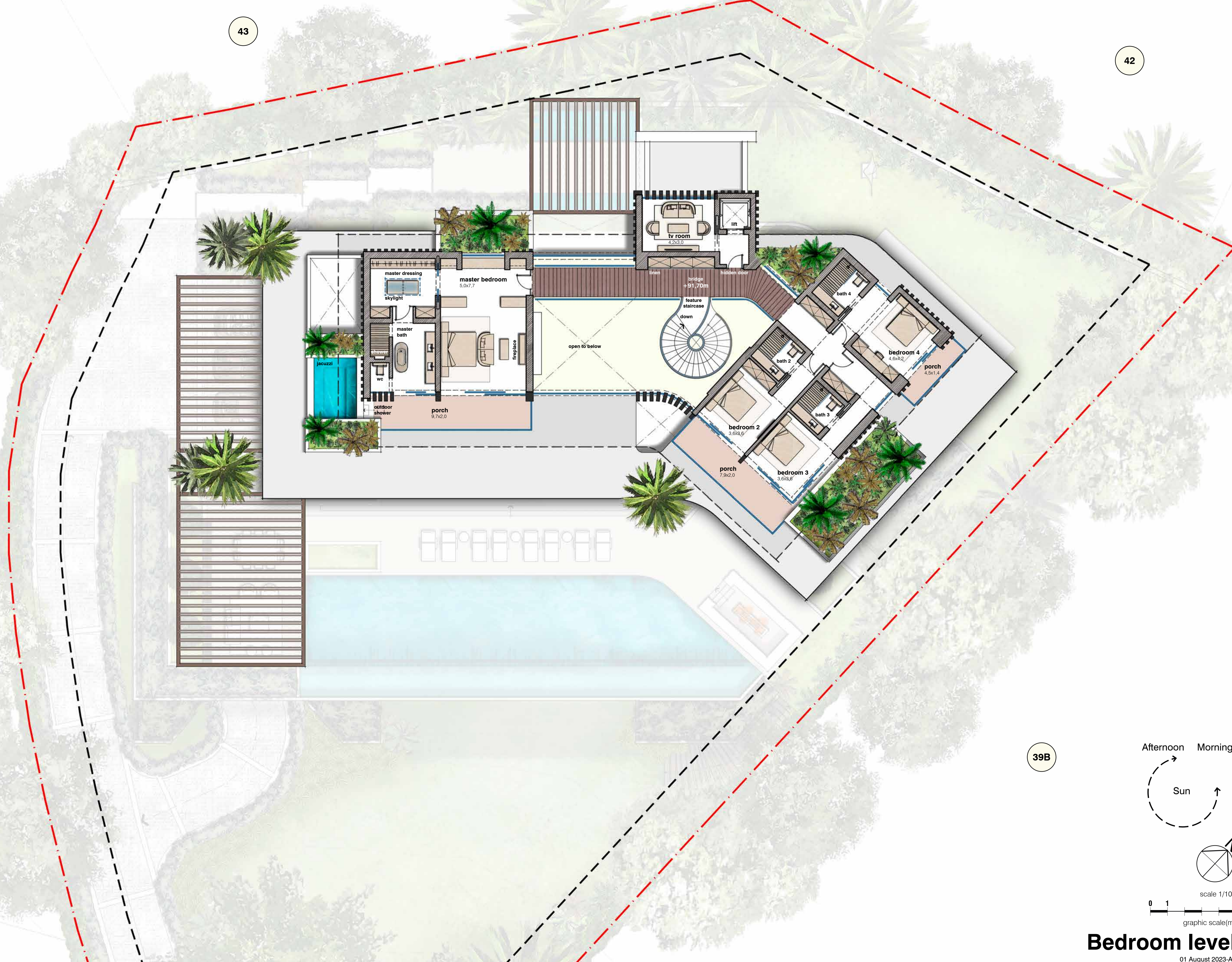


scale 1/100  
0 1 5  
graphic scale(m)

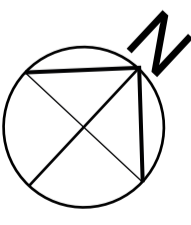
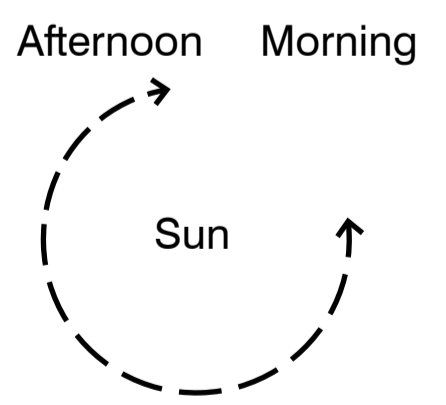
**Bedroom level**

01 August 2023-A2  
Marbella

**La Cerquilla 39A**



- technical room projection
- double height
- staff/technical area
- refurbishment



scale 1/100  
0 1 5  
graphic scale(m)

# Leisure level

01 August 2023-A2  
Marbella

# La Cerquilla 39A















